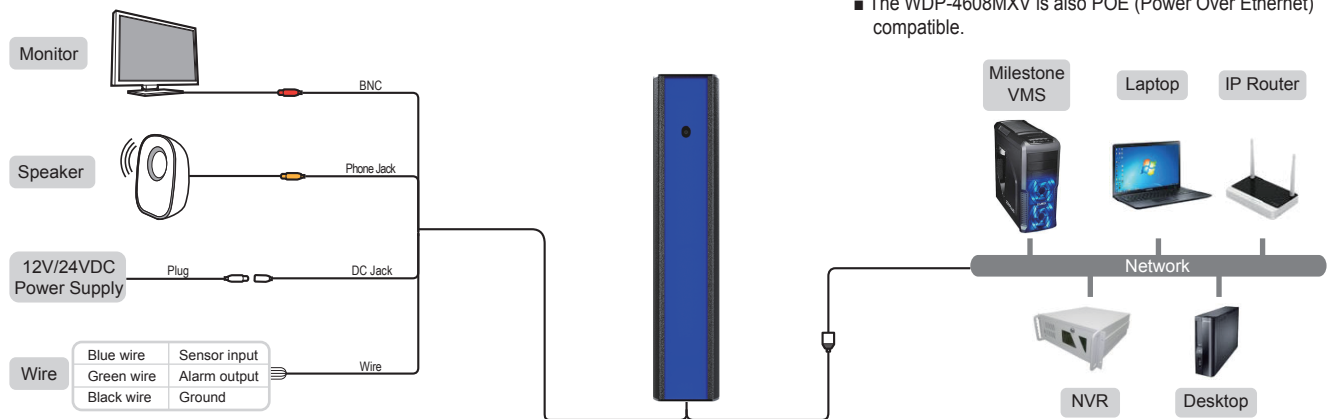
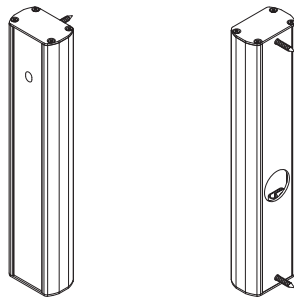


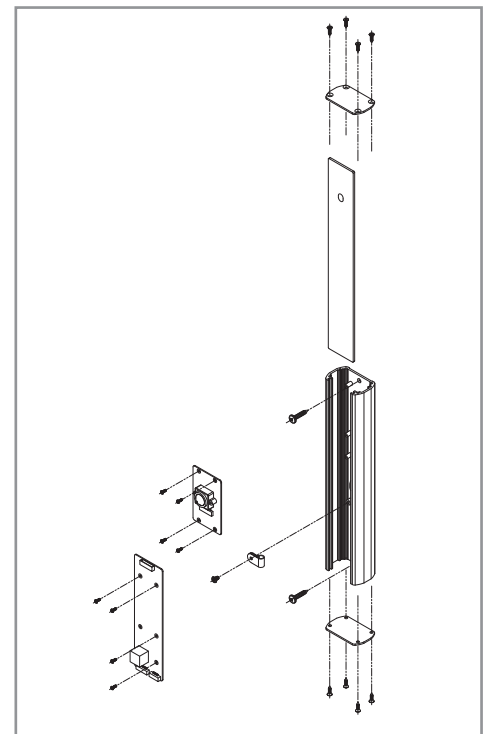
## ❖ Camera Cable Connections



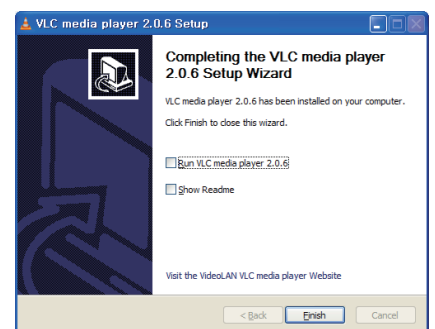
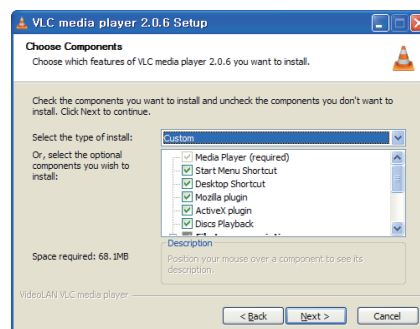
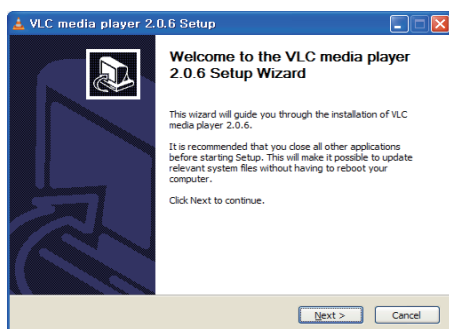
## ❖ Installing the camera on a wall



1. Fix the case body on the wall by using Tapping Screws(BHT M4xL16).
2. Connect ethernet and accessory cables and arrange cable running not to damage or squeeze them.
3. Pass the ethernet and power accessory cables through the hole you want to pass them when mounting the main body on the case.
4. Assemble the Height-Strip Cover.
5. Fasten 4 screws by turning top plate clockwise.

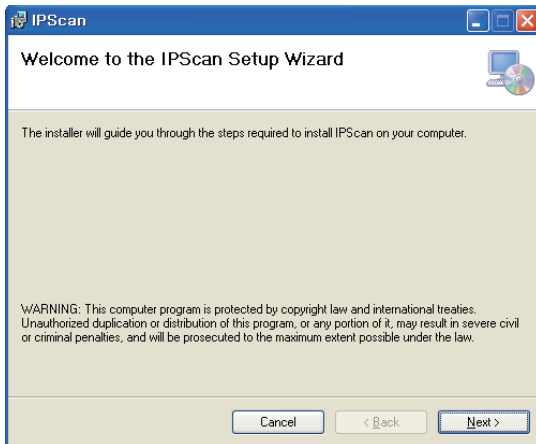


## ❖ VLC Media Player 2.0.6[or Higher version] Setup



1. Install the 'vlc-2.0.6-win32-weldex-certification.exe' executable file.
2. From the [Select the type of install] dropdown menu, choose [custom].
3. Confirm the installation path and click[Next] to start copying files to the PC.
4. Uncheck the [Run VLC media player 2.0.6] checkbox
5. Click on the [Finish] button to complete the installation.

## ❖ IP Scan Software Setup

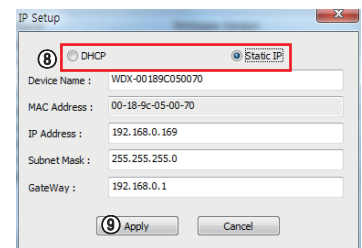
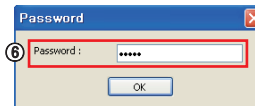
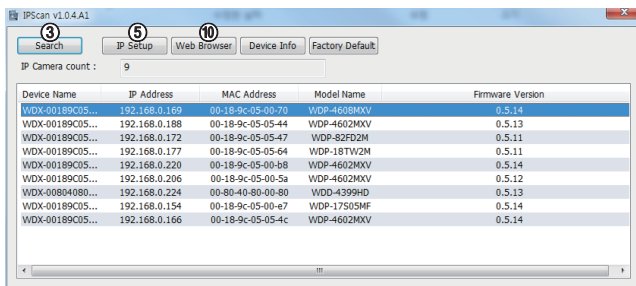


① Install the latest 'IPScan software' executable file.



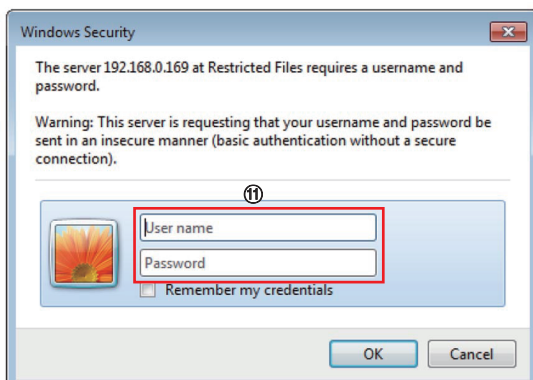
② Run the IP Scan shortcut icon on main screen.

## ❖ Change the Camera's Network settings



- ③ Click Search on the IPScan window.
- ④ Click the row of the device you wish to configure.
- ⑤ Click the IP Setup icon.
- ⑥ Enter the admin's password. default password is [admin]
- ⑦ If you want to change IP address, enter a valid IP address, Subnet mask, and Gateway.
- ⑧ You can select the IP service type such as DHCP, Static IP.
- ⑨ Click Apply icon and wait for 30 seconds.
- ⑩ Click Web Browser icon.

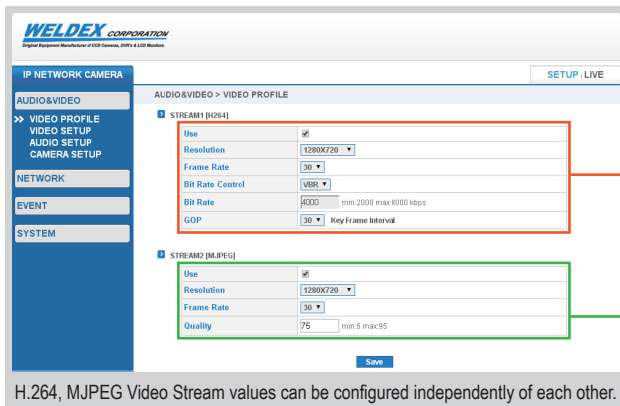
## ❖ Web Viewer Login



- ⑪ You will be prompted to enter a username and password. default username is [admin] and default password is [admin].
- ⑫ After a successful login, the WEB Viewer screen will be displayed in your web browser.

## Access the IP Camera Setup page on Web Viewer

### Video Profile Setup

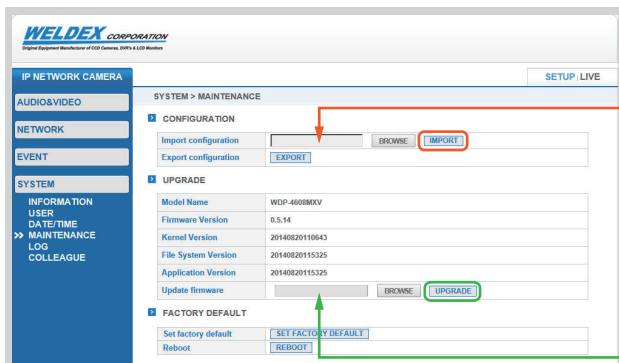


H.264, MJPEG Video Stream values can be configured independently of each other.

- **Default Resolution : 1280x720**  
640x480, 800x480, 800x600, 1024x768, 1280x720, 1280x1024, 1920x1080
- Frame rate : 1 ~ 30
- Bit Rate Control : CBR / VBR
- Bit Rate : 2Mbps ~ 10Mbps  
Default : 4Mbps
- GOP : 1 ~ 90 default 30

- **Default Resolution : 1280x720**  
640x480, 800x480, 800x600, 1024x768, 1280x720, 1280x1024, 1920x1080
- Frame rate : 1 ~ 30
- MJPEG Quality : 5 ~ 95  
Default : 75

### Maintenance Setup

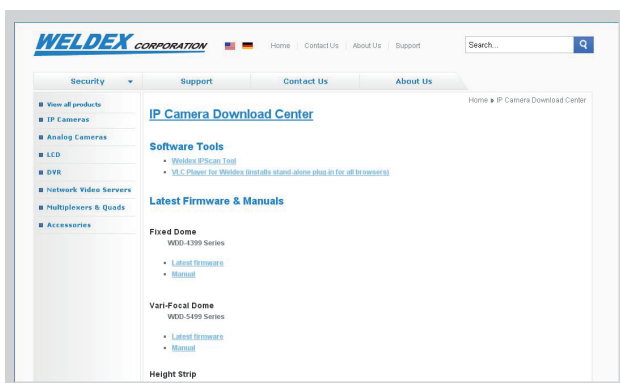


Use this page to perform firmware upgrade, import/export settings, restore factory default and reboot the device.

- **Import Setup**  
Click on the [BROWSE] button and select the configuration file [sysenv.cfg] from the connected PC.  
Click [IMPORT] to apply the configuration file settings.  
after a few seconds, the device will reboot.

- **Upgrade Setup**  
Click [BROWSE] icon and select the firmware file as above picture.  
Click [UPGRADE] icon to start the upgrade process.  
The upgrade progress bar will display the status of the upgrade.  
after a few minutes, the device will reboot.  
After a successful upgrade, [Complete] message window will pop-up.

### Software Download



For software download, refer to below website address.

<https://downloads.weldex.com/index.php/category/2-ip>