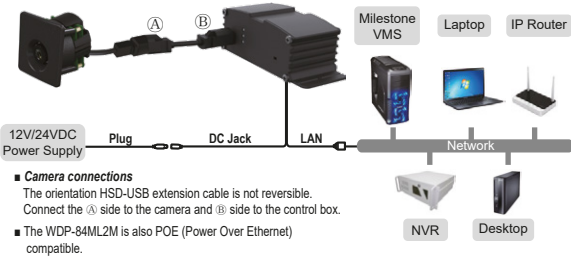


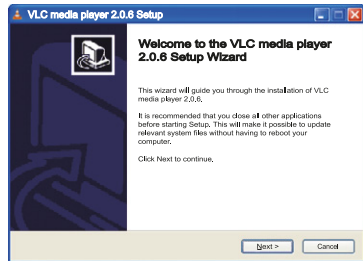
WDP-84ML2M Quick Installation Guide

Rev. E WELDEX CORPORATION

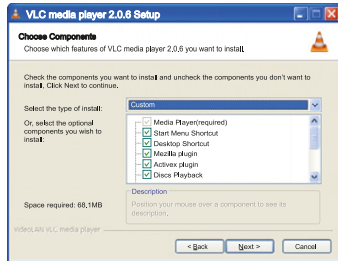
Camera Cable Connections



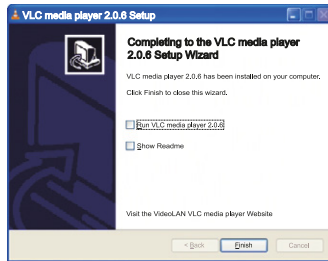
VLC Media Player 2.0.6[or Higher version] Setup



1. Install the 'vlc-2.0.6-win32-weldex-certification.exe' executable file.

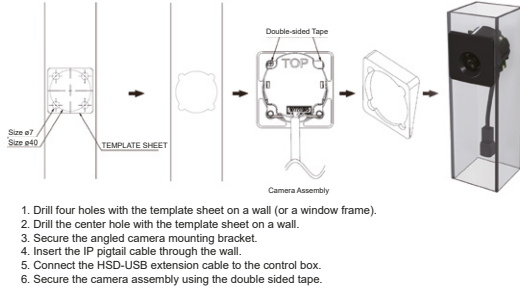


2. From the [Select the type of install] dropdown menu, choose [custom].
3. Confirm the installation path and click[Next] to start copying files to the PC.



4. Uncheck the [Run VLC media player 2.0.6] checkbox.
5. Click on the [Finish] button to complete the installation.

Installing the camera on a wall



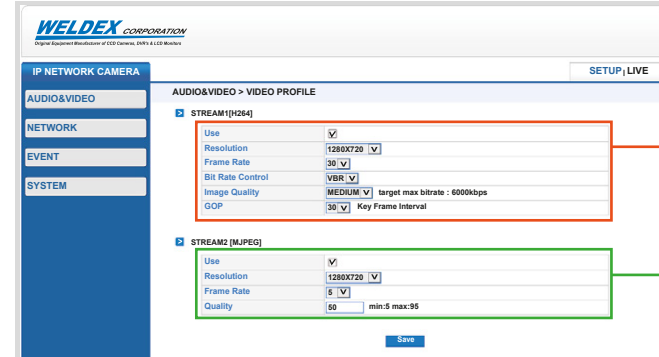
Web Viewer Login



- 11 You will be prompted to enter a username and password. default username is [admin] and default password is [admin].
- 12 After a successful login, the WEB Viewer screen will be displayed in your web browser.

Access the IP Camera Setup page on Web Viewer

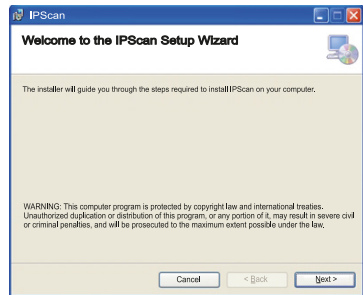
Video Profile Setup



- **Default Resolution : 1280x720**
640x480, 800x480, 800x600, 1024x768, 1280x720, 1280x1024, 1920x1080
- Frame rate : 1 ~ 30
- Bit Rate Control : CBR / VBR
- Image Quality : LOW / MEDIUM / HIGH
Default : MEDIUM
- GOP : 1 ~ 30 default 30

- **Default Resolution : 1280x720**
640x480, 800x480, 800x600, 1024x768, 1280x720, 1280x1024, 1920x1080
- Frame rate : 1 ~ 30
- MJPEG Quality : 5 ~ 95
Default : 50

IP Scan Software Setup

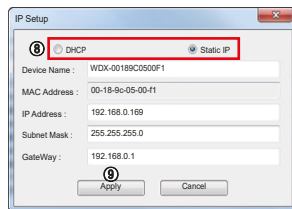
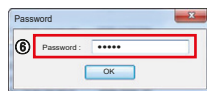


- 1 Install the latest 'IPScan software' executable file.
- 2 Run the IP Scan shortcut icon on main screen.

Change the Camera's Network settings

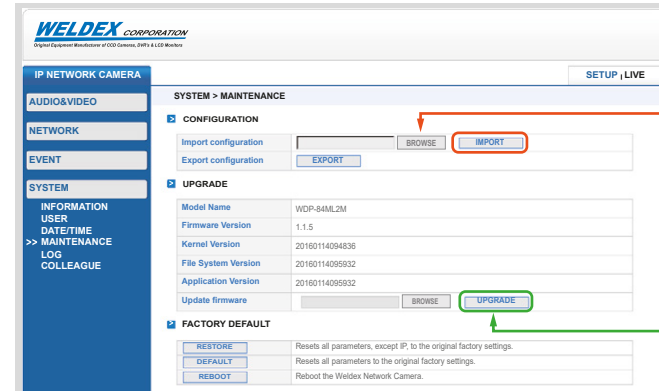
Device Name	IP Address	MAC Address	Model Name	Firmware Version
WDX-00189C05...	11.22.33.103	00-18-9c-05-00-d3	WDP-17S05MF	0.5.23
WDX-00189C05...	192.168.0.171	00-18-9c-05-00-3e	WDP-17S05MF	0.5.20
WDX-00189C05...	192.168.0.188	00-18-9c-05-05-44	WDP-4602MXV	0.5.20
WDX-00189C05...	192.168.0.166	00-18-9c-05-05-4c	WDP-4602MXV	0.5.16
WDX-00189C05...	192.168.0.169	00-18-9c-05-00-41	WDP-84ML2M	1.1.5
WDX-00189C05...	192.168.0.180	00-18-9c-05-00-5a	WDP-84ML2M	0.5.16
WDX-00189C05...	192.168.0.175	00-18-9c-05-00-70	WDP-4608MXV	0.5.23
WDX-00189C05...	11.22.33.102	00-18-9c-05-00-af	WDP-17S05MF	0.5.23
WDX-00189C05...	11.22.33.101	00-18-9c-05-00-e8	WDP-17S05MF	0.5.23
WDX-00189C05...	192.168.0.81	00-18-9c-05-05-4a	WDP-4602MXV	0.5.21

*Caution : The default IP is 192.168.0.200 – If there is no DHCP server present

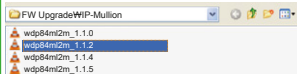


- 3 Click Search on the IPScan window.
- 4 Click the row of the device you wish to configure.
- 5 Click the IP Setup icon.
- 6 Enter the admin's password, default password is [admin]
- 7 If you want to change IP address, enter a valid IP address, Subnet mask, and Gateway.
- 8 You can select the IP service type such as DHCP, Static IP.
- 9 Click Apply icon and wait for 30 seconds.
- 10 Click Web Browser icon.

Maintenance Setup

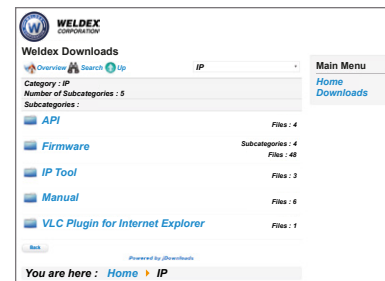


- **Import Setup**
Click on the [BROWSE] button and select the configuration file [sysenv.cfg] from the connected PC.
Click [IMPORT] to apply the configuration file settings.
after a few seconds, the device will reboot.



- **Upgrade Setup**
Click [BROWSE] icon and select the firmware file as above picture.
Click [UPGRADE] icon to start the upgrade process.
The upgrade progress bar will display the status of the upgrade.
after a few minutes, the device will reboot.
After a successful upgrade, [Complete] message window will pop-up.

Software Download



For software download, refer to below website address.
<https://downloads.weldex.com/>

www.weldex.com / oem@weldex.com
Tel : 1-(714)761-2100 [USA]
Fax : 1-(714)761-3811 [USA]
Tel : +49-(0)8142-651490 [GERMANY]
Fax : +49-(0)8142-651-4920 [GERMANY]
Tel : +61-7-3801-5818 [OCEANIA]
Fax : +61-7-3801-3424 [OCEANIA]