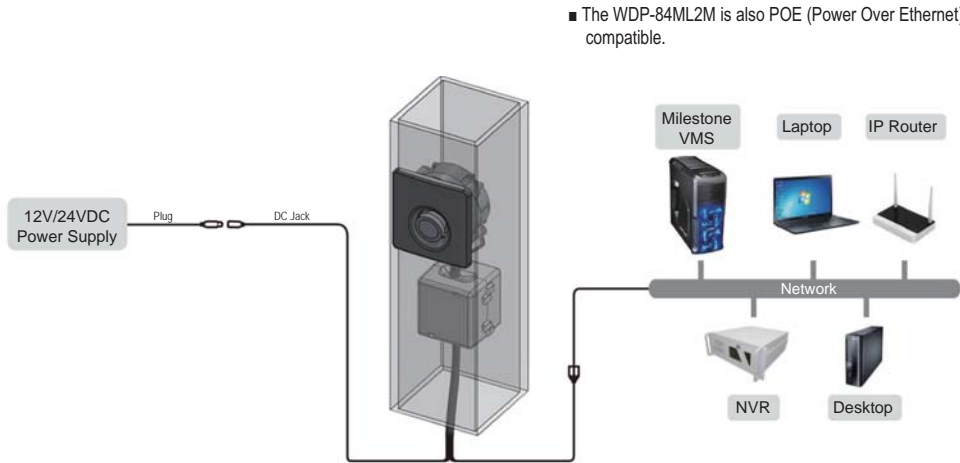
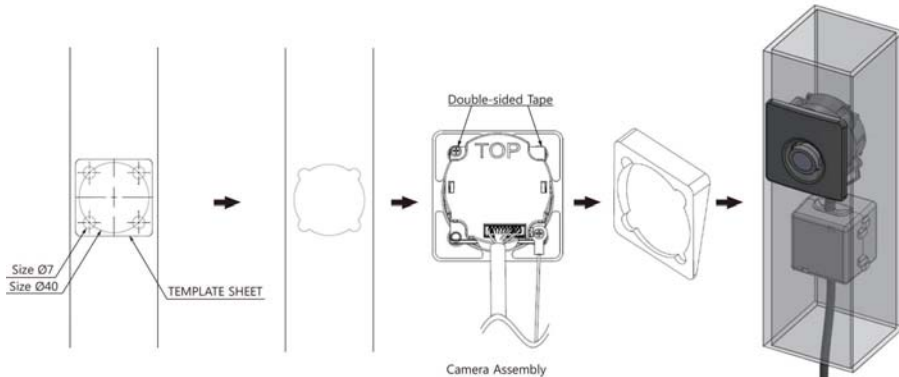


## ❖ Camera Cable Connections

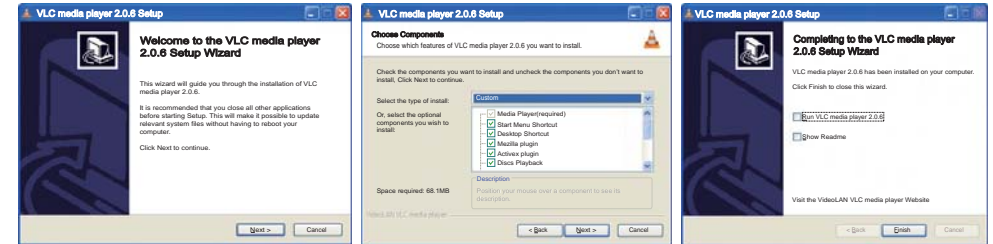


## ❖ Installing the camera on a wall



1. Please bore four holes for template sheet on a wall(or window frame).
2. Please bore a center hole for template sheet on a wall.
3. Assemble angled mounting block for camera assembly.
4. Connect the IP pigtail cable within a wall.
5. Connect the Power-box interface cable to camera assembly.
6. Assemble the safety wire to camera assembly.
7. Assemble camera assembly on a wall using double-sided tape.

## ❖ VLC Media Player 2.0.6[or Higher version] Setup



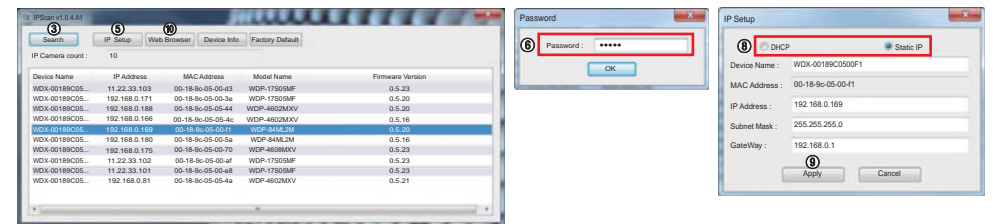
1. Install the 'vlc-2.0.6-win32-weldex-certification.exe' executable file.
2. From the [Select the type of install] dropdown menu, choose [custom].
3. Confirm the installation path and click[Next] to start copying files to the PC.
4. Uncheck the [Run VLC media player 2.0.6] checkbox
5. Click on the [Finish] button to complete the installation.

## ❖ IP Scan Software Setup



- ① Install the latest 'IPScan software' executable file.
- ② Run the IP Scan shortcut icon on main screen.

## ❖ Change the Camera's Network settings



- ③ Click Search on the IPScan window.
- ④ Click the row of the device you wish to configure.
- ⑤ Click the IP Setup icon.
- ⑥ Enter the admin's password. default password is [admin]
- ⑦ If you want to change IP address, enter a valid IP address, Subnet mask, and Gateway.
- ⑧ You can select the IP service type such as DHCP, Static IP.
- ⑨ Click Apply icon and wait for 30 seconds.
- ⑩ Click Web Browser icon.

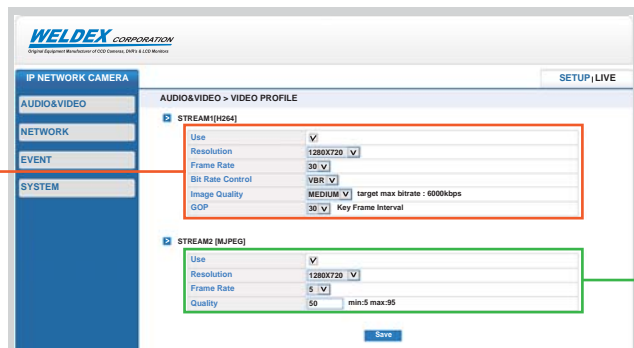
## ❖ Web Viewer Login



- ① You will be prompted to enter an username and password. default username is [admin] and default password is [admin].
- ② After a successful login, the WEB Viewer screen will be displayed in your web browser.

## Access the IP Camera Setup page on Web Viewer

### ❖ Video Profile Setup

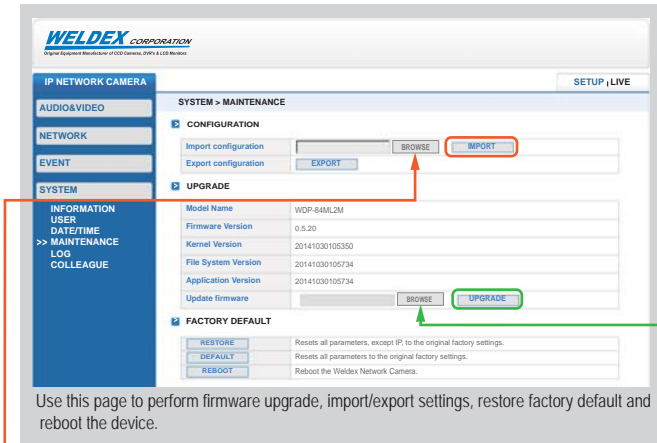


H.264, MJPEG Video Stream values can be configured independently of each other.

- **Default Resolution : 1280x720**  
640x480, 800x480, 800x600, 1024x768, 1280x720, 1280x1024, 1920x1080
- Frame rate : 1 ~ 30
- Bit Rate Control : CBR / VBR
- Image Quality : LOW/ MEDIUM/ HIGH  
Default : MEDIUM
- GOP : 1 ~ 30 default 30

- **Default Resolution : 1280x720**  
640x480, 800x480, 800x600, 1024x768, 1280x720, 1280x1024, 1920x1080
- Frame rate : 1 ~ 30
- MJPEG Quality : 5 ~ 95  
Default : 50

## ❖ Maintenance Setup



Use this page to perform firmware upgrade, import/export settings, restore factory default and reboot the device.

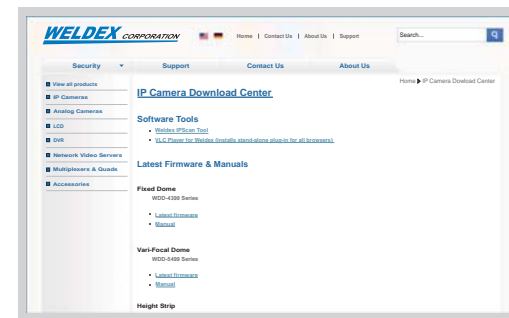
**Import Setup**

Click on the [BROWSE] button and select the configuration file [sysenv.cfg] from the connected PC. Click [IMPORT] to apply the configuration file settings. after a few seconds, the device will reboot.

**Upgrade Setup**

Click [BROWSE] icon and select the firmware file as above picture. Click [UPGRADE] icon to start the upgrade process. The upgrade progress bar will display the status of the upgrade. after a few minutes, the device will reboot. After a successful upgrade, [Complete] message window will pop-up.

## ❖ Software Download



For software download, refer to below website address.

<http://security.weldex.com/index.php/ip-camera-download-center>