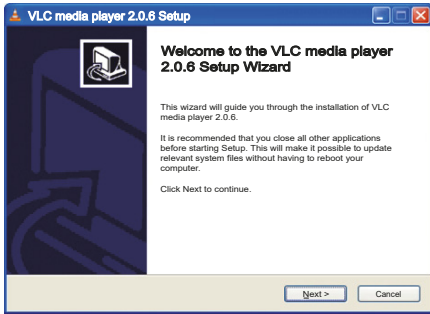


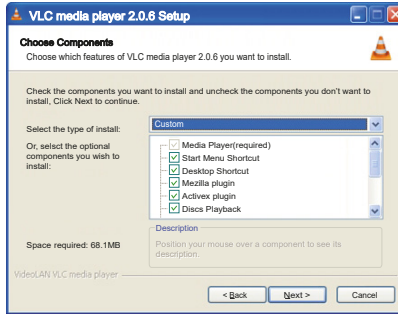
# Generic Quick Installation Guide

Default Username : admin | Default Password : admin | Default IP address if there is no DHCP server present : 192.168.0.200 / 255.255.0.0

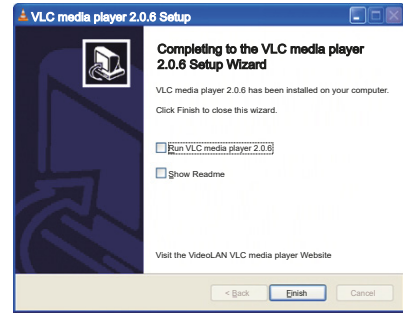
## VLC Media Player 2.0.6[or Higher version] Setup



1. Install the 'vlc-2.0.6-win32-welddex-certification.exe' executable file.

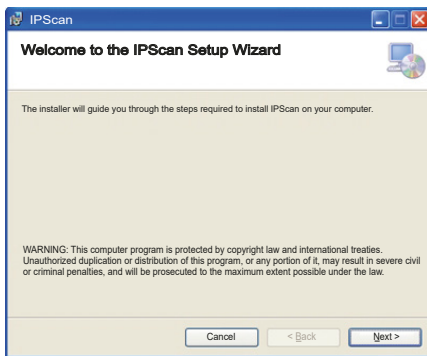


2. From the [Select the type of install] dropdown menu, choose [custom].  
3. Confirm the installation path and click[Next] to start copying files to the PC.



4. Uncheck the [Run VLC media player 2.0.6] checkbox  
5. Click on the [Finish] button to complete the installation.

## IP Scan Software Setup

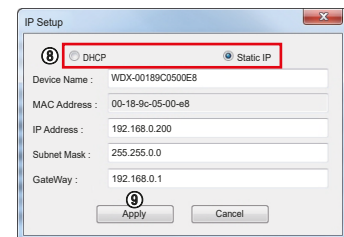
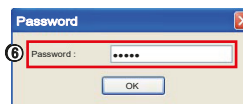
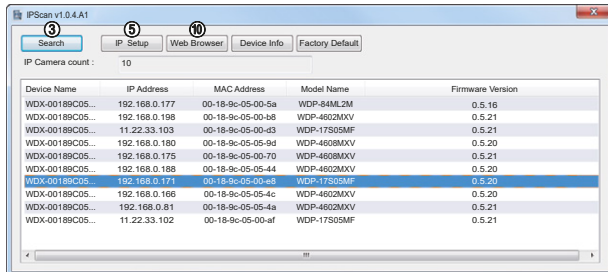


① Install the latest 'IPScan software' executable file.



② Run the IP Scan shortcut icon on main screen.

## Change the Camera's Network settings



\*Caution : The default IP is 192.168.0.200 – if there is no DHCP server present

③ Click Search on the IPScan window.  
④ Click the row of the device you wish to configure.  
⑤ Click the IP Setup icon.  
⑥ Enter the admin's password. default password is [admin]

⑦ If you want to change IP address, enter a valid IP address, Subnet mask, and Gateway.  
⑧ You can select the IP service type such as DHCP, Static IP.  
⑨ Click Apply icon and wait for 30 seconds.  
⑩ Click Web Browser icon.

## Web Viewer Login



⑪ You will be prompted to enter an username and password. default username is [admin] and default password is [admin].  
⑫ After a successful login, the WEB Viewer screen will be displayed in your web browser.

## Access the IP Camera Setup page on Web Viewer

### Video Profile Setup

**Stream 1 [H264]**

- Use:
- Codec Type: H.264
- Resolution: 1920x1080
- Frame Rate: 30
- Bit Rate Control: VBR
- Image Quality: MEDIUM (target max bitrate: 6000kbps)
- Bit Rate: 4000 (min:400 max:10000 kbps)
- GOP: 30 (Key Frame Interval)
- H264 Profile: HIGH

**Stream 2 [MJPEG]**

- Use:
- Codec Type: H.264
- Resolution: 640x480
- Frame Rate: 5
- Jpeg Quality: 50 (min:5 max:95)

**Stream 3 [H264, MJPEG]**

- Use:
- Codec Type: H.264
- Resolution: 800x600
- Frame Rate: 30
- Bit Rate Control: VBR
- Image Quality: MEDIUM (target max bitrate: 3000kbps)
- Bit Rate: 4000 (min:400 max:8000 kbps)
- GOP: 30 (Key Frame Interval)
- H264 Profile: HIGH

#### Stream 1

- Resolution : 2048x1536, 1920x1080, 1280x1024, 1280x720, 1024x768, 800x600, 800x480, 640x480
- Frame rate : 1~30
- Bit rate control : cbr/ vbr
- Image quality : low / medium / high
- Bit rate : 400~10000
- Gop : 1~30
- H264 profile : baseline, main, high

#### Stream 2

- Resolution : 640x480
- Frame rate : 1~30
- Quality : 5~95

#### Stream 3

- Resolution : 1280x1024, 1280x720, 1024x768, 800x600, 800x480, 640x480
- Frame rate : 1~30
- Bit rate control : cbr/ vbr
- Image quality : low / medium / high
- Bit rate : 400~10000
- Gop : 1~30
- H264 profile : baseline, main, high

H.264, MJPEG Video Stream values can be configured independently of each other.

### Maintenance Setup

**CONFIGURATION**

Import configuration:

Export configuration:

**UPGRADE**

Model Name: WDP-17S05MF

Firmware Version: 0.5.20

Kernel Version: 20140926172731

File System Version: 20140923173252

Application Version: 20140923173252

Update firmware:

**FACTORY DEFAULT**

Resets all parameters, except IP, to the original factory settings.

Resets all parameters to the original factory settings.

Reboot the Wdelix Network Camera.

#### Import Setup

- Click on the [BROWSE] button and select the configuration file [sysenv.cfg] from the connected PC.
- Click [IMPORT] to apply the configuration file settings.
- after a few seconds, the device will reboot.

#### Upgrade Setup

- Click [BROWSE] icon and select the firmware file as above picture.
- Click [UPGRADE] icon to start the upgrade process.
- The upgrade progress bar will display the status of the upgrade.
- after a few minutes, the device will reboot.
- After a successful upgrade, [Complete] message window will pop-up.

Use this page to perform firmware upgrade, import/export settings, restore factory default and reboot the device.

### Software Download

**WELDEX CORPORATION**

Wdelix Downloads

Overview Search Up - Firmware Main Menu

Category : Firmware  
Number of Subcategories : 1

Subcategories :  
Archive Subcategories : 4  
Files : 21

Release Notes for Ambarella IP Cameras [Download]

Release Notes for TI IP Cameras [Download]

wdd4399hdn\_1.3.3\_20170619 [Download]

wdd5499hdn\_1.3.3\_20170619 [Download]

For software download, refer to below website address.

<https://downloads.weldex.com/index.php/category/2-ip>